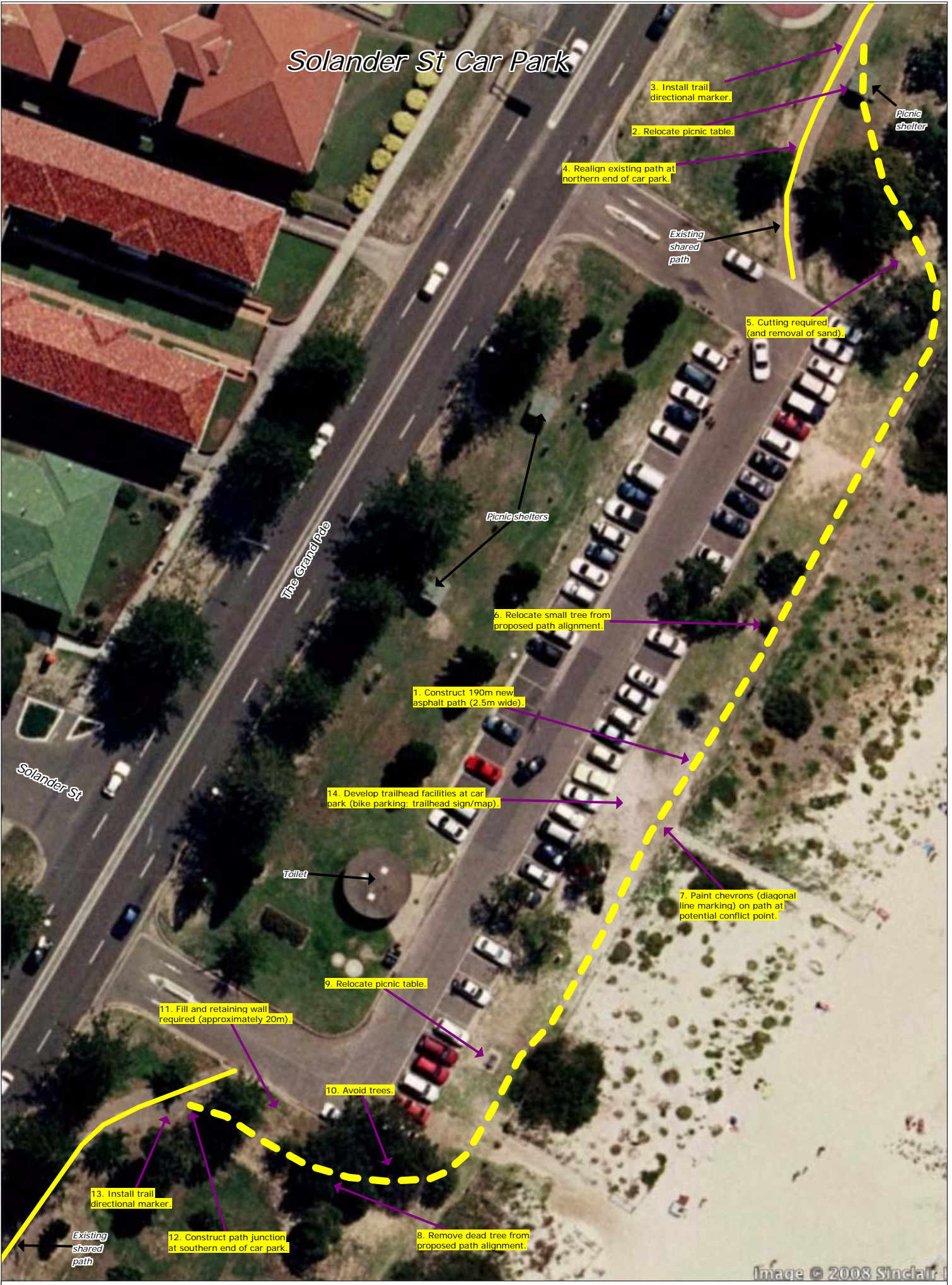


# Solander St Car Park



3. Install trail directional marker.

2. Relocate picnic table.

4. Realign existing path at northern end of car park.

Existing shared path

5. Cutting required (and removal of sand).

Picnic shelters

6. Relocate small tree from proposed path alignment.

1. Construct 190m new asphalt path (2.5m wide).

14. Develop trailhead facilities at car park (bike parking; trailhead sign/map).

Toilet

7. Paint chevrons (diagonal line marking) on path at potential conflict point.

9. Relocate picnic table.

11. Fill and retaining wall required (approximately 20m).

10. Avoid trees.

13. Install trail directional marker.

12. Construct path junction at southern end of car park.

8. Remove dead tree from proposed path alignment.

Existing shared path

Image © 2008 Sinclair