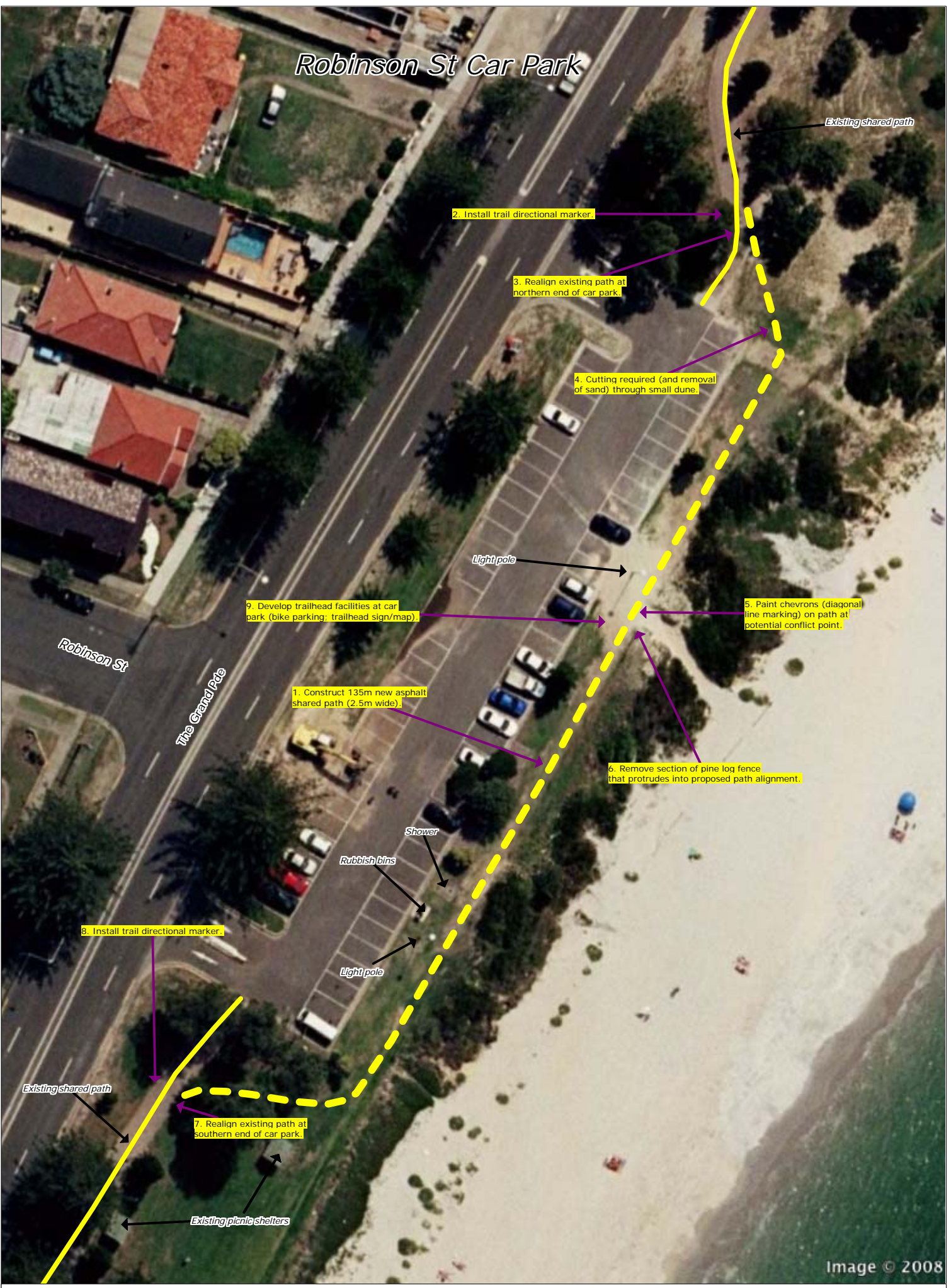


Robinson St Car Park



2. Install trail directional marker.

3. Realign existing path at northern end of car park.

4. Cutting required (and removal of sand) through small dune.

9. Develop trailhead facilities at car park (bike parking, trailhead sign/map).

5. Paint chevrons (diagonal line marking) on path at potential conflict point.

1. Construct 135m new asphalt shared path (2.5m wide).

5. Remove section of pine log fence that protrudes into proposed path alignment.

8. Install trail directional marker.

7. Realign existing path at southern end of car park.

Image © 2008

